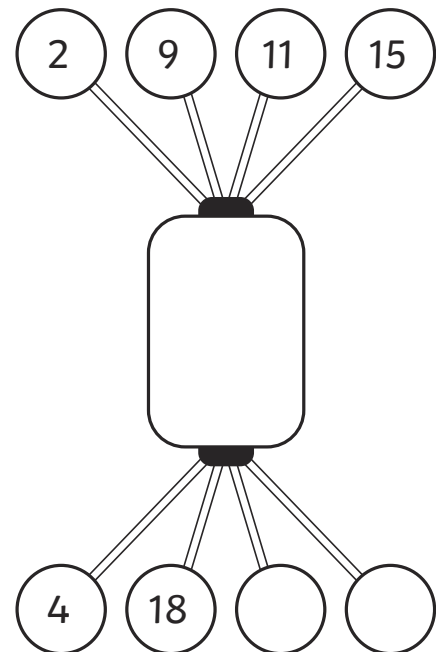
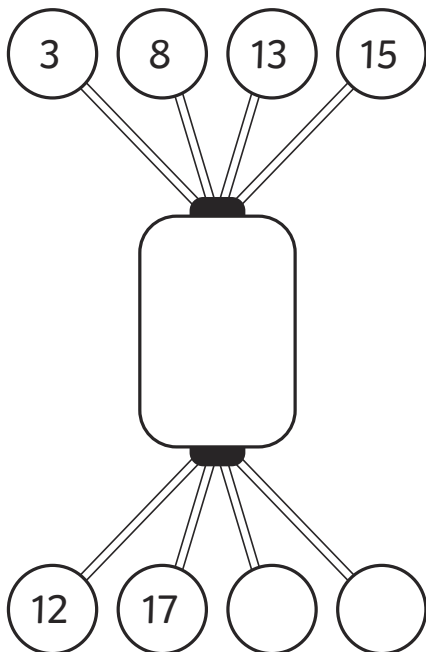
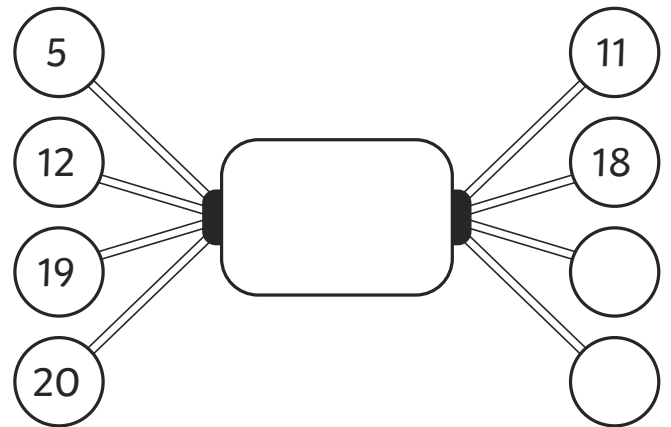
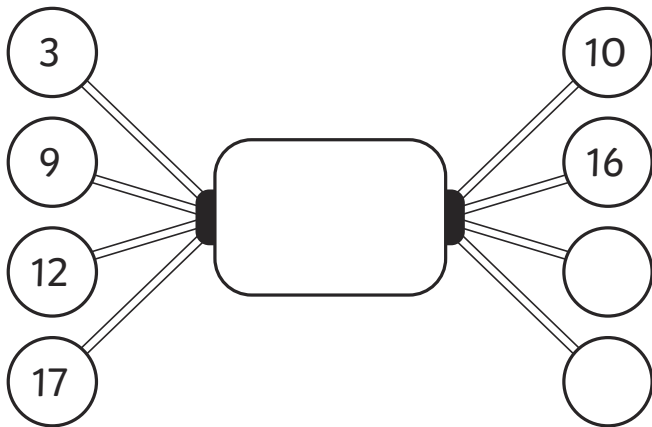


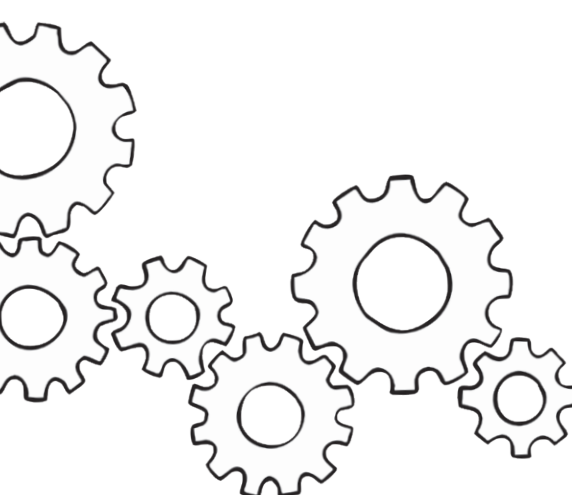
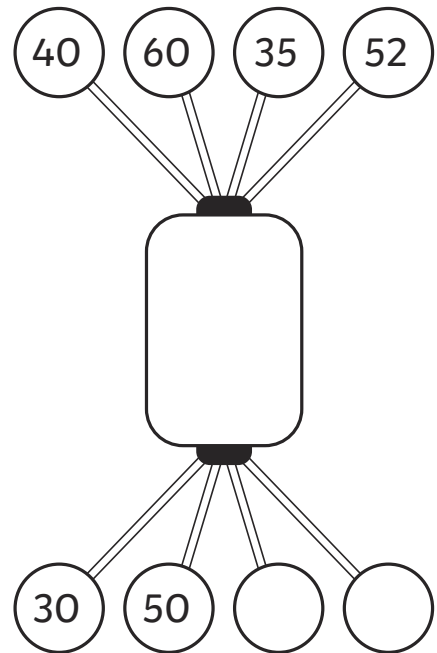
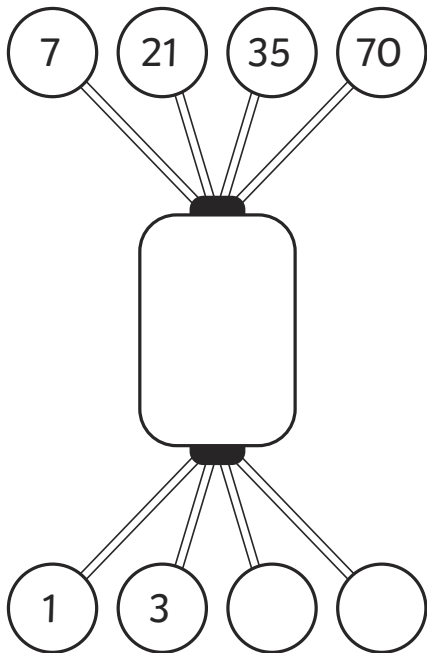
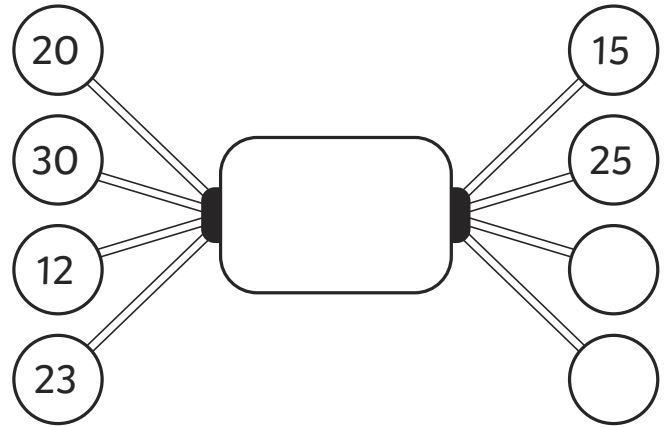
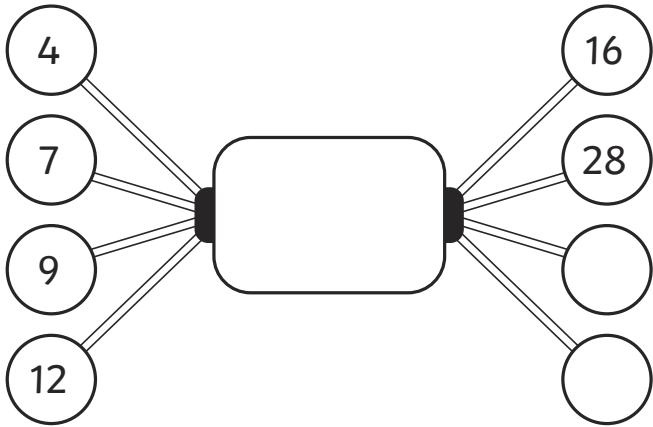
# The Number Pattern Machine

When we make a number pattern rule, we can think of the rule as a machine. We can put numbers into the machine (the input), the machine uses the rule to do something to the number and then it gives us the new answers at the end (the output).

Figure out the rules for each of these machines. Write it in the middle of the machine, then fill in the missing output values.



# The Number Pattern Machine



# The Number Pattern Machine

## Answers

